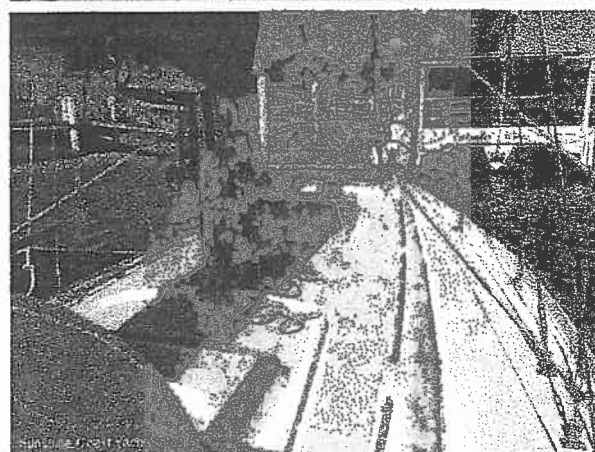
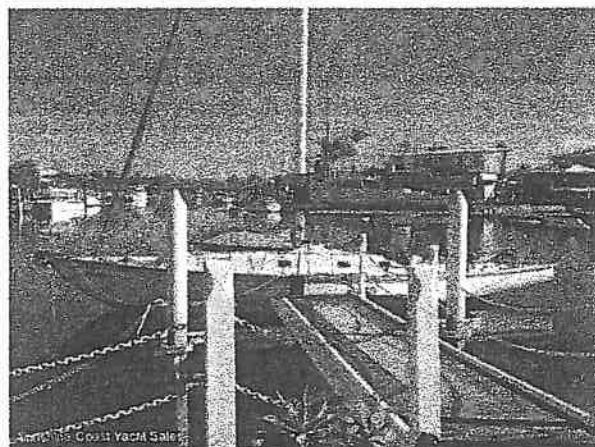
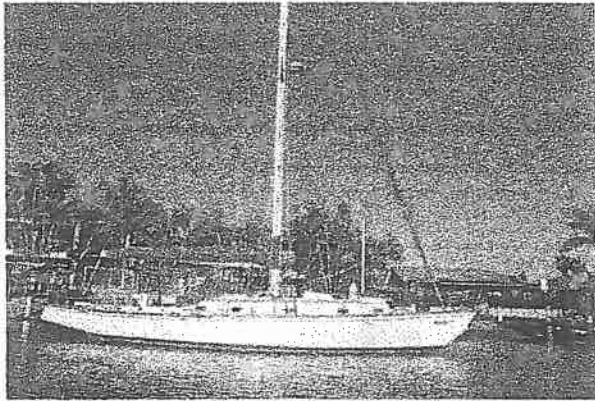


Alan Payne

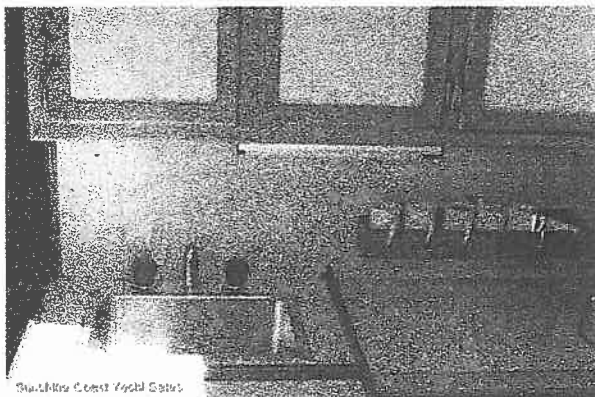
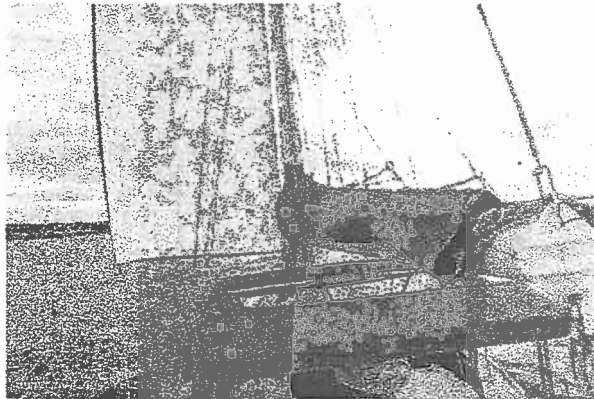
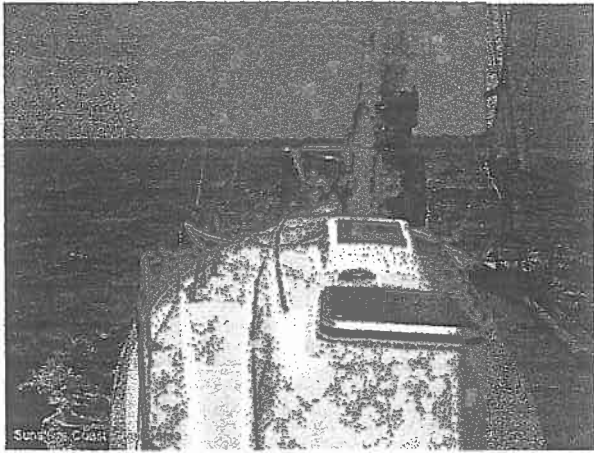
Absolute bargain, 41ft fibreglass cruising yacht with 2014 rigging and low hrs on a near new 55HP Volvo Penta.

'Monsoon' is a solidly built boat from Alan Payne, launched just prior to 1970. After a racing career with Jock Sturrock, including several Sydney-Hobarts and Melbourne-Hobarts, she retired from racing and was cruised for many years as far north as the Lousiades. Anti-fouled several months back, her hull is in excellent condition and she is loaded with all the cruising goodies including Aries wind Vane, solar panels, radar etc: If your looking for a well found budget cruising yacht be quick, dont miss out!



Details

Vessel Name	Monsoon
Length	41' 0" - 12.50m
Beam	12'
Draft	6' 2"
Keel / Ballast	Full keel with lead ballast, cut-away forefoot and aperture for propellor
Designer	Alan Payne
Builder	Jock Sturrock
Hull Material	Fibreglass/GRP
Decks Material	GRP
Engine	Volvo Penta, full instruments, 3-bladed Volvo folding prop. Full service of engine, gen-set and outboard all completed and up to date. Engine room all round accessibility, engine in immaculate condition.
Engine Make/Model	Volvo Penta
Horsepower	55HP
Engine Hours	1369
Propulsion	3-bladed Volvo folding prop
Genset	3.5 KVA Mace
Fuel	250L in SS tanks in excellent condition
Water	325L in SS tanks in excellent condition
Dinghy	2.4m Alloy
Outboard	3HP Yamaha
Covers	Drop-down cockpit covers, large spray dodger, with bimini.
Accommodation	Quarter berths x 2, Saloon berths x 3. Stb saloon berth converts to a large slide out three-quarter berth. In addition, two pipe cots can be installed forward, at present this area is used for storage and workshop.
Berths	5
Shower	Cockpit shower (to be reconnected)
Toilet	Brand new electric toilet with holding tank all in very good condition



- Entertainment AM/FM Radio/Cassette.
- Refrigeration Large 12 volt fridge and generous 12 volt freezer for cruising
- Stove New Smev three burner gas stove with oven
- Ground Tackle Bruce 30lb, CQR 20 lb, 100m x 3/8" short link chain
- Safety Gear Lifesling, V-Sheet, 2 x new large fire extinguishers, throwing lines, flares, EPIRB, 4 person liferaft(not in survey), water-maker, airhorn, hand held compass, PDF's x 2, new SS lifelines.
- Electrics ICOM HF Radio, Navman VHF Radio, Garmin 510 Plotter, handheld GPS, Furuno 1721 Radar, Navman Fishfinder 435, Tack Tick wind instrument, Coursemaster CM 420 Auto Pilot.
- Electronics Chartplotter with electronic charts, SESTREL compass, some paper charts.
- Sail Inventory Fully battened Ullman Main in Dacron with lazyjacks and boom bag, fully refurbished Profurl roller furler, 140% Smith Headsail in Dacron, Spinnaker with sock and trisail all in very good condition.
- Mast / Rigging New Stainless Steel standing rigging installed August 2014, using Arcus 316 1 x19 s/s wire. Fully refurbished boom. Alloy spinnaker pole.
- Deck Gear Muir Electric anchor winch, Barlow sheet winches x 4 in cockpit plus reefing winch on boom and halyard winches on mast. ~~Aries~~ windvane, solar panels, SS ladder, table, screens for hatches assorted cruising gear and folding mast steps.

x

o

x

x

Aries

